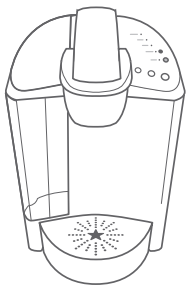


Caring for your Brewer

Regular cleaning keeps your brewer running smoothly. Always be sure to turn off and unplug your brewer before cleaning.

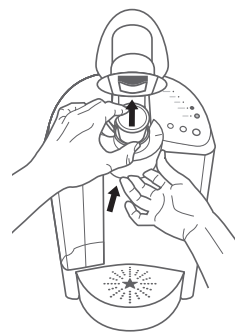


Brewer Exterior

Keep your Keurig® brewer looking its best by cleaning the exterior from time to time. Just clean with a damp, soapy, lint-free, non-abrasive cloth. Never immerse the brewer in water or other liquids.

Drip Tray

The drip tray can hold up to 8 ounces of overflow and should be emptied and cleaned occasionally. To remove, slide it toward you, keeping it level to avoid spilling. Clean in dishwasher (top rack only) or rinse and clean with a damp, soapy, lint-free, non-abrasive cloth.



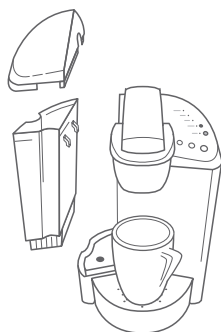
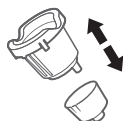
K-Cup® Pod Holder

To remove the K-Cup® pod holder from the brewer, lift the handle and grasp the top of the K-Cup® pod holder with one hand while pushing up on the bottom of the K-Cup® pod holder from underneath with the other until it releases. After cleaning, align the K-Cup® pod holder with the opening using the two front ribs as a guide and snap into place from the top.

CAUTION: There are sharp needles that puncture the K-Cup® pod above the K-Cup® pod holder and in the bottom of the K-Cup® pod holder. To avoid risk of injury, do not put your fingers in the K-Cup® pod holder.

Funnel

The funnel can be removed from the K-Cup® pod holder by pulling on it until it pops off. To replace it, just snap it back onto the K-Cup® pod holder.



Water Reservoir & Reservoir Lid

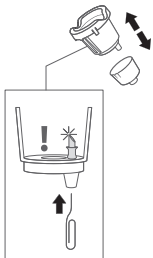
The water reservoir lid and water reservoir should be periodically cleaned with a damp, soapy, non-abrasive cloth and rinsed thoroughly. The water reservoir lid and water reservoir should not be put into the dishwasher. Do not dry the inside of the water reservoir with a cloth as lint may remain.

To clean the filter screen at the base of your water reservoir, empty the water reservoir and follow one or all of the following procedures:

NOTE: If you are using a water filter inside the water reservoir, remove it before cleaning.

- Rinse the filter screen with the strong force of water from your faucet.
- If you have a sprayer, aim the water spray at the filter screen.
- Fill the water reservoir with approximately two inches of clean water and agitate (shake) the water reservoir. Empty the water reservoir, fill with clean water, and return it to the brewer. If needed, repeat above procedures.

CAUTION: Please rinse the water reservoir thoroughly after cleaning. This will ensure that no cleaning solutions remain in this area as they may contaminate the water supply in the brewer.



Exit Needle

Remove the pod holder assembly and detach the funnel. Locate the exit needle on the inside bottom of the K-Cup® pod holder. Insert a straightened paper clip into the exit needle to loosen the clog and push it out.

Entrance Needle

Lift the brewer handle and locate the entrance needle on the underside of the lid. To clean both holes in the needle, hold the brewer handle in the upward position and with your other hand, carefully insert a straightened paper clip into both holes. Gently move it around to loosen any coffee grounds. Lower the handle completely and run two water-only brew cycles. Do not insert a K-Cup® pod.

TIP: Refer to www.Keurig.com/support for video instructions on cleaning the entrance/exit needles.

Descaling your Brewer

You should descale your brewer every 3-6 months. Properly follow the descaling procedure.

Depending on the mineral content of your water, calcium deposits or scale may build up in your brewer. Scale is non-toxic but if left unattended can hinder brewer performance. Regularly descaling your brewer every 3-6 months helps maintain the heating element, and other internal parts that come in contact with water. Calcium deposits may build up faster, making it necessary to descale more often.

Descaling Procedure

Before you begin, you will need a large ceramic mug, fresh water, Keurig® Descaling Solution, and access to a sink. Do not use a paper cup. Ensure that there is no beverage pod in the K-Cup® pod holder, and disable the Auto Off feature on your brewer if it has been enabled. Please allow approximately 45 minutes for the descaling procedure.

Empty the water from the water reservoir. If using a Keurig® Water Filter, remove and set aside.

STEP 1: Descaling Solution Rinse

Press the power button to power the brewer off.

Pour the entire bottle of Keurig® Descaling Solution into an emptied water reservoir. Then fill the empty bottle with water and pour into the water reservoir. Press the power button to turn the brewer back on.

Place a large mug on the drip tray and run a rinsing brew by lifting and lowering the handle and selecting the largest brew size.

STEP 2: Descaling Rinse & Repeat

Repeat the rinsing brew process until the add water light is illuminated. Do not use a K-Cup® pod. Let brewer stand for at least 30 minutes while still on.

After 30 minutes, discard any residual solution from the water reservoir and rinse thoroughly.

STEP 3: Fresh Water Rinse

Fill the water reservoir with fresh water to and not beyond the MAX FILL line.

Place a large mug on the drip tray plate and run a rinsing brew using the largest brew size. Do not use a K-Cup® pod. Pour the contents of the mug into the sink.

Repeat brew process until you have completed at least 12 rinsing brews using the largest brew size. You may need to refill the water reservoir at least one time during this process.

NOTE: The cleaning action of Keurig® Descaling Solution may result in a “foam” dispensed from the brewer. This is natural, as the solution is reacting with the scale inside. For a brewer that is heavily scaled, the brewer may not fill properly after the descaler is added. If this occurs, you may see only a small or no output dispensed, followed by the sound of air blowing out. If this occurs:

- Turn off and unplug the brewer.
- If there is Keurig® Descaling Solution in the water reservoir, discard the contents, rinse the water reservoir thoroughly and refill with water.
- Plug the brewer back in, power on, and repeat the Step 3 Fresh Water Rinse cycle. The brewer should begin to function normally as the solution is rinsed out and the scale is removed. If problem persists, allow brewer to sit unplugged for at least 30 minutes before continuing with the rinse.

Brewing a Partial Cup

• The exit needle may be clogged. Refer to the Exit Needle care instructions.

• The water reservoir may have been removed during brewing. Replace the water reservoir and perform a rinsing brew without a K-Cup® pod.

• The brewer may need to be descaled. If you have repeated the descale procedure on your brewer two times and it is still only brewing a partial cup, contact Customer Service.

Brewer Does Not Have Power or Shuts Off

• Make sure that the power button has been turned on.

• Plug brewer into its own grounded outlet. If the electric circuit is overloaded with other appliances, your brewer may not function properly. The brewer should be operated on its own circuit, separate from other appliances.

• Auto Off sets the brewer to turn off 2 hours after the last brew for energy savings. Refer to Brewer Features for instructions on enabling and disabling this feature.

• If the brewer still doesn't have power, contact Customer Service.

Helpful Hints

Water quality varies greatly. If you notice an undesirable taste in your beverage (such as chlorine or mineral tastes), we recommend using bottled or filtered water. Do not use distilled water. You can also install a Keurig® Water Filter to help remove water impurities and improve beverage taste.

Service

Beyond these recommended cleaning and maintenance procedures, this brewer is not user serviceable. For service, please refer to the Warranty section of this guide.

Storage

Empty the water reservoir before storing or transporting and take care to ensure that you store your brewer in a safe and frost free environment. Please be sure to store your brewer in its upright position to avoid water leakage from the inner tank. If you store the brewer in a cold environment, you run the risk of water freezing inside the brewer and causing damage. When you prepare to use it after storage, we recommend rinsing the water reservoir with fresh water and running three rinsing brews without a K-Cup® pod.

If you plan to move your brewer to a different location, turn the brewer off, unplug it, and empty the water reservoir. If your brewer has been in an environment below freezing, please be sure to let it warm to room temperature for at least 2 hours before using.

Warranty

LIMITED ONE YEAR WARRANTY

Keurig Green Mountain, Inc. (Keurig) warrants that your brewer will be free of defects in materials or workmanship under normal home use for one year from the date of purchase. It is recommended that you register your brewer on Keurig.com/new so that your purchase information will be stored in our system. Keurig will, at its option, repair or replace a defective brewer without charge upon its receipt of proof of the date of purchase. If a replacement brewer is necessary to service this warranty, the replacement brewer may be new or reconditioned. If a replacement brewer is sent, a new limited one year warranty will be applied to the replacement brewer.

This warranty only applies to brewers operated in the United States and Canada. This warranty gives you specific legal rights, and you may also have other rights that vary from state to state and, in the case of Canada, from province to province.

Only the use of Keurig® K-Cup® brand pods and accessories will guarantee the proper functioning and lifetime of your Keurig® brewer. Any damage to or malfunction of your brewer resulting from the use of non-Keurig® pods and accessories may not be covered by this warranty or may result in a service fee if the damage or malfunction is determined to be caused by such use.

WHAT IS NOT COVERED BY THE LIMITED WARRANTY?

THIS WARRANTY DOES NOT COVER CONSEQUENTIAL OR INCIDENTAL DAMAGES SUCH AS PROPERTY DAMAGE AND DOES NOT COVER INCIDENTAL COSTS AND EXPENSES RESULTING FROM ANY BREACH OF THIS WARRANTY, EVEN IF FORESEEABLE. Some states or provinces do not allow the exclusion or limitations of incidental or consequential damages, so the above limitation or exclusion may not apply to you depending on the state or province of purchase.

Click or Call!

Have Questions?

We're here to help. Visit www.Keurig.com/support for step-by-step videos on cleaning, descaling, and more.



Still Need Help?

Give us a call at
1-866-901-BREW (2739)

Nor does this warranty cover damages caused by use of non-Keurig® pods or accessories, services performed by anyone other than Keurig or its authorized service providers, use of parts other than genuine Keurig® parts, or external causes such as abuse, misuse, inappropriate power supply, or acts of God.

OTHER LIMITATIONS

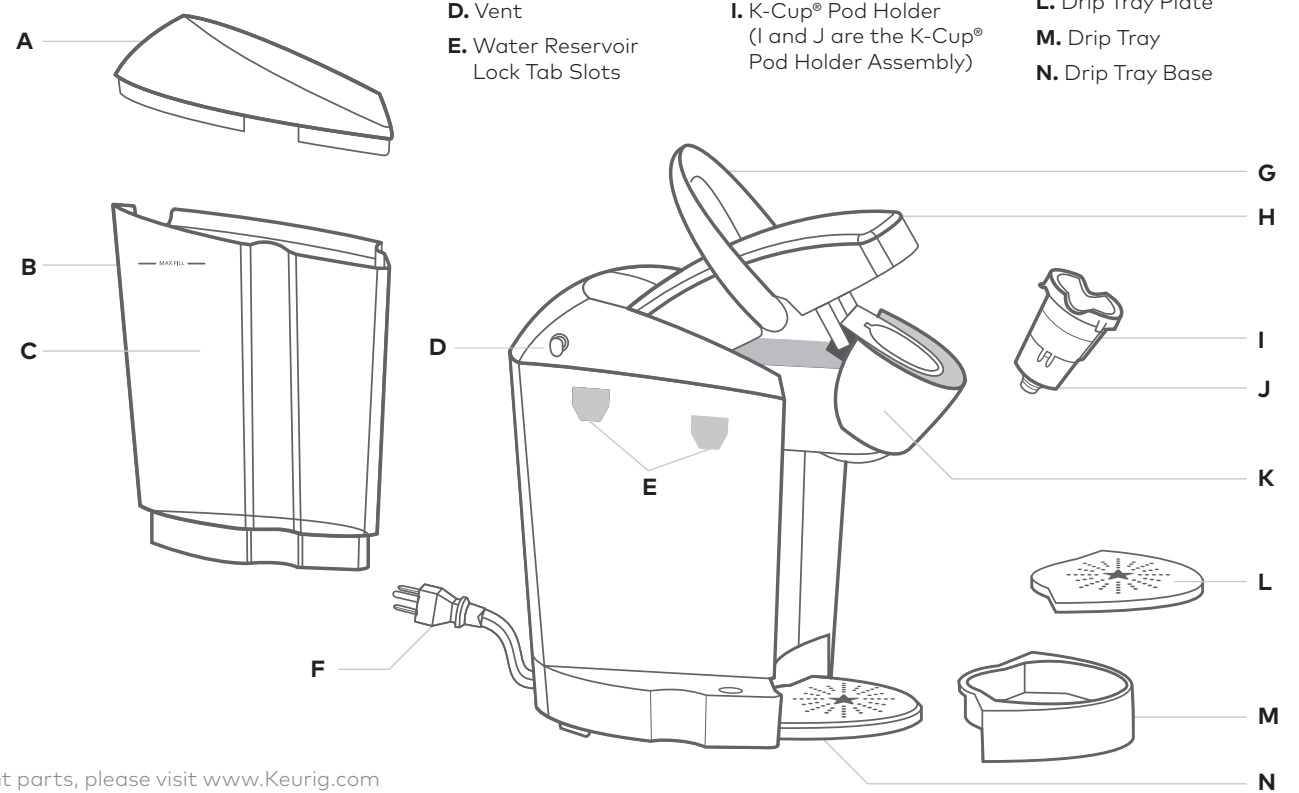
THIS WARRANTY IS EXCLUSIVE AND IS IN LIEU OF ANY OTHER EXPRESS WARRANTY, WHETHER WRITTEN OR ORAL. IN ADDITION, KEURIG HEREBY SPECIFICALLY DISCLAIMS ALL OTHER WARRANTIES WITH RESPECT TO YOUR K-CLASSIC™ BREWER, INCLUDING ANY IMPLIED WARRANTY OF MERCHANTABILITY OR FITNESS FOR ANY PARTICULAR PURPOSE. Some states or provinces do not allow disclaimers of such implied warranties or limitations on how long an implied warranty lasts, so the above limitation may not apply to you depending on the state or the province of purchase.

HOW DO YOU OBTAIN WARRANTY SERVICE?

Keurig® brewers are high-quality appliances and, with proper care, are intended to provide years of satisfying performance. However, should the need arise for warranty servicing, simply call Keurig Customer Service at our toll free phone number 1.866.901.BREW (2739). Please do not return your brewer for servicing without first speaking to Keurig Customer Service to obtain a Return Materials Authorization (RMA) number. Keurig® brewers returned without a RMA number will be returned to the sender without servicing.

K-CLASSIC™ BREWER

- A. Water Reservoir Lid
- B. MAX FILL Line
- C. Water Reservoir
- D. Vent
- E. Water Reservoir Lock Tab Slots
- F. Power Cord
- G. Handle
- H. Lid
- I. K-Cup® Pod Holder (I and J are the K-Cup® Pod Holder Assembly)
- J. Funnel
- K. K-Cup® Pod Assembly Housing
- L. Drip Tray Plate
- M. Drip Tray
- N. Drip Tray Base



For replacement parts, please visit www.Keurig.com



KEURIG®

Keurig Green Mountain, Inc.
33 Coffee Lane
Waterbury, VT 05676
1.866.901.BREW (2739)

Fully experience the benefits that come with your new Keurig® brewer at

KEURIG.COM/NEW



REGISTER

your new Keurig® brewer to activate your warranty and receive a special savings offer



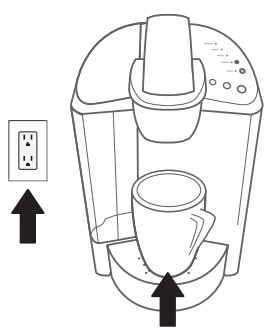
DISCOVER

your favorite coffees with our **customized taste quiz** and get personalized recommendations

Before You Brew

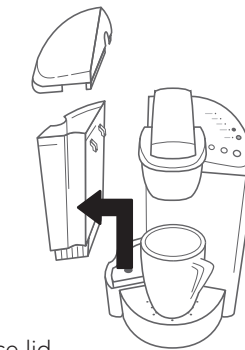
1 Plug & Place

Remove packing tape from brewer and plug into a grounded outlet. Place a large mug (10 oz. minimum) on the drip tray plate.



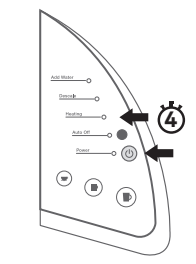
2 Rinse & Fill

Remove the water reservoir lid, then lift the reservoir straight up to remove it. If you have a Keurig® Water Filter, install it now. Refer to your Water Filter Starter Kit for instructions. Rinse reservoir with fresh water and fill to the **MAX FILL** line. Replace water reservoir, making sure the lock tabs engage with the brewer. Replace lid. **NOTE:** Do not use distilled water.



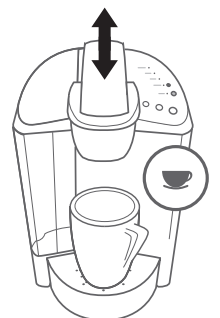
3 Power On

Press power button — the green power light will illuminate. The brewer will automatically begin heating the water. The red heating light will illuminate for about 4 minutes. Once the heating light goes off and the brew buttons illuminate, the brewer is ready.



4 Lift & Lower

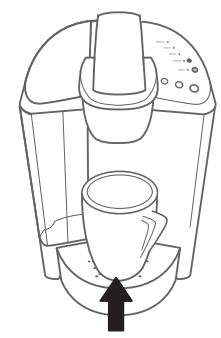
Lift and lower the handle. **Do not insert a K-Cup® pod.** The three brew buttons will blink. Press the small cup button to start a cleansing brew. Pour the hot water into the sink. **The one-time setup process is now complete and you are ready to brew!**



Brew Your First Cup

5 Place Mug

Place a mug on the drip tray plate. If using a travel mug, remove the drip tray and place the mug on the drip tray base. **NOTE:** Between brew cycles, the brewer may take 15 seconds to reheat during which time the red heating light may be illuminated.



6 Lift & Insert

Lift the handle and place a K-Cup® pod in the K-Cup® pod holder. Lower the handle completely to close the lid. **Do not remove the foil lid on the K-Cup® pod.** **High Altitude Brewing:** While holding the brewer handle up, push down slowly on the K-Cup® pod in the pod holder until the bottom of the K-Cup® pod is punctured by the exit needle.



7 Brew & Enjoy

Select your brew size. The button will remain illuminated while brewing — about 1 minute. Brewing ends with a burst of air. Lift the handle and dispose of the used K-Cup® pod. The brewer will be ready to brew another cup in less than a minute. **NOTE:** After 60 seconds, the brew buttons will be disabled. To re-activate, lift and lower the handle completely. **CAUTION:** While brewing, there is extremely hot water in the K-Cup® pod holder. To avoid injury, do not lift the handle during the brewing process.



Brewer Features

Auto Off sets the brewer to turn off 2 hours after the last brew for energy savings. To enable, press the black Auto Off button and the green light will illuminate. To disable, press the Auto Off button again.

